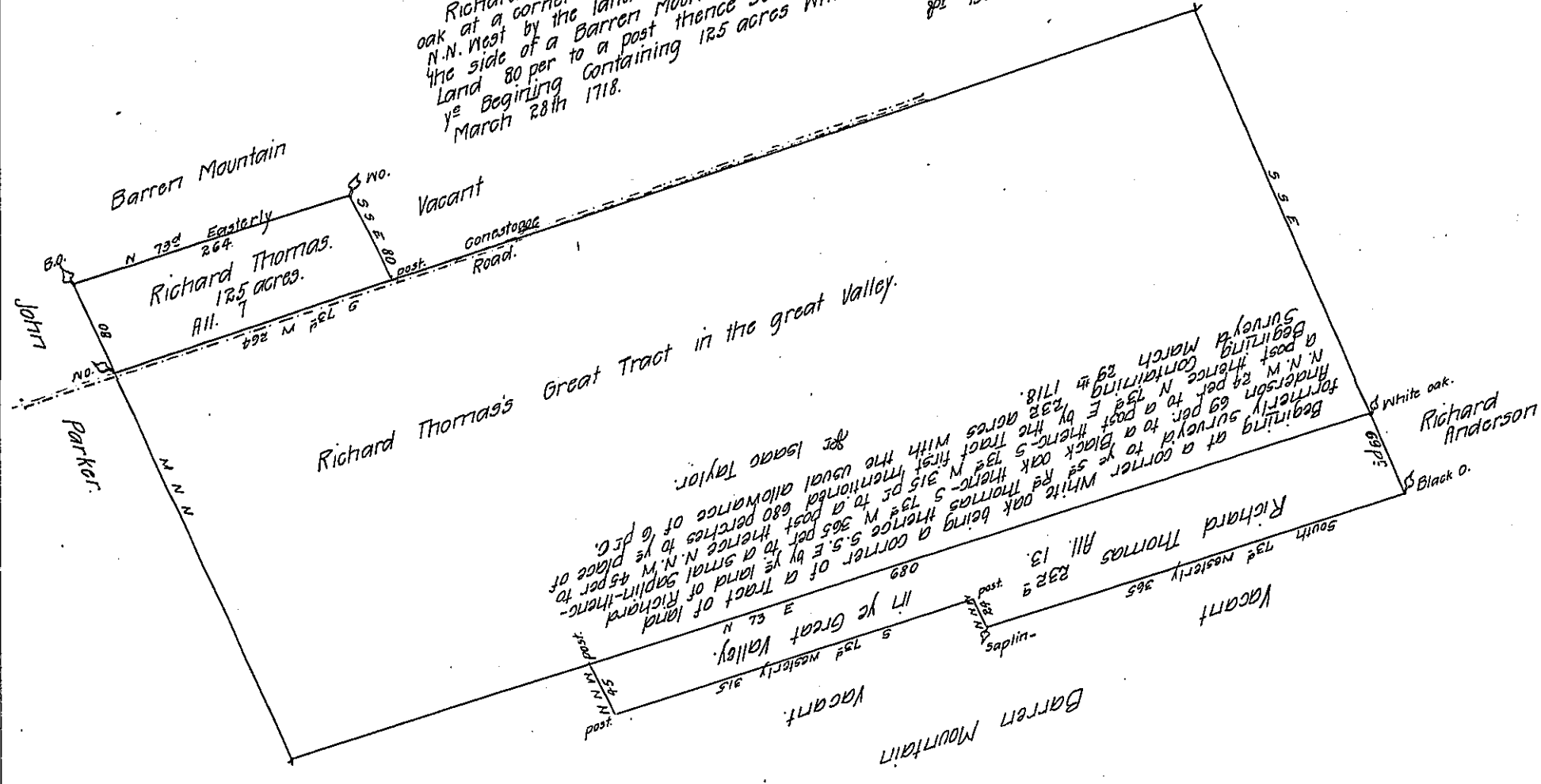


Richard Thomas's land in the Great Valley Beginning at a corner marked white oak at a corner of a Tract of land formerly survey'd to ye 5^d R^d Thomas N 73^d E by N.N. West by the land of John Parker 80 perches to a Black oak thence N 73^d E by the side of a Barron Mountain 264 perches to a white oak thence S. 5. E by Vacant Land 80 per to a post thence South 73^d W by ye 5^d R^d Thomas's land 264 per to ye Beginning containing 125 acres with the usual allowance of 6 p^{er} C. Survey'd March 28th 1718.
 per Isaac Taylor.



These 2 tracts were survey'd to Richard Thomas by virtue of the Commissioners warrant Dated 12. 8th 1717 as part of his Fathers purchase of 5000^a
 Vizt the 125^{ac} & 232^{ac} making tog^e 357^{ac} the quantity expressed in the said warrant.

IN TESTIMONY that the above is a copy of the original remaining on file in the Department of Internal Affairs of Pennsylvania, made conformably to an Act of Assembly approved the 16th day of February, 1833, I have hereunto set my Hand and caused the Seal of said Department to be affixed at Harrisburg, this
 twenty- first day of February 1911.
 Henry Houck
 Secretary of Internal Affairs.